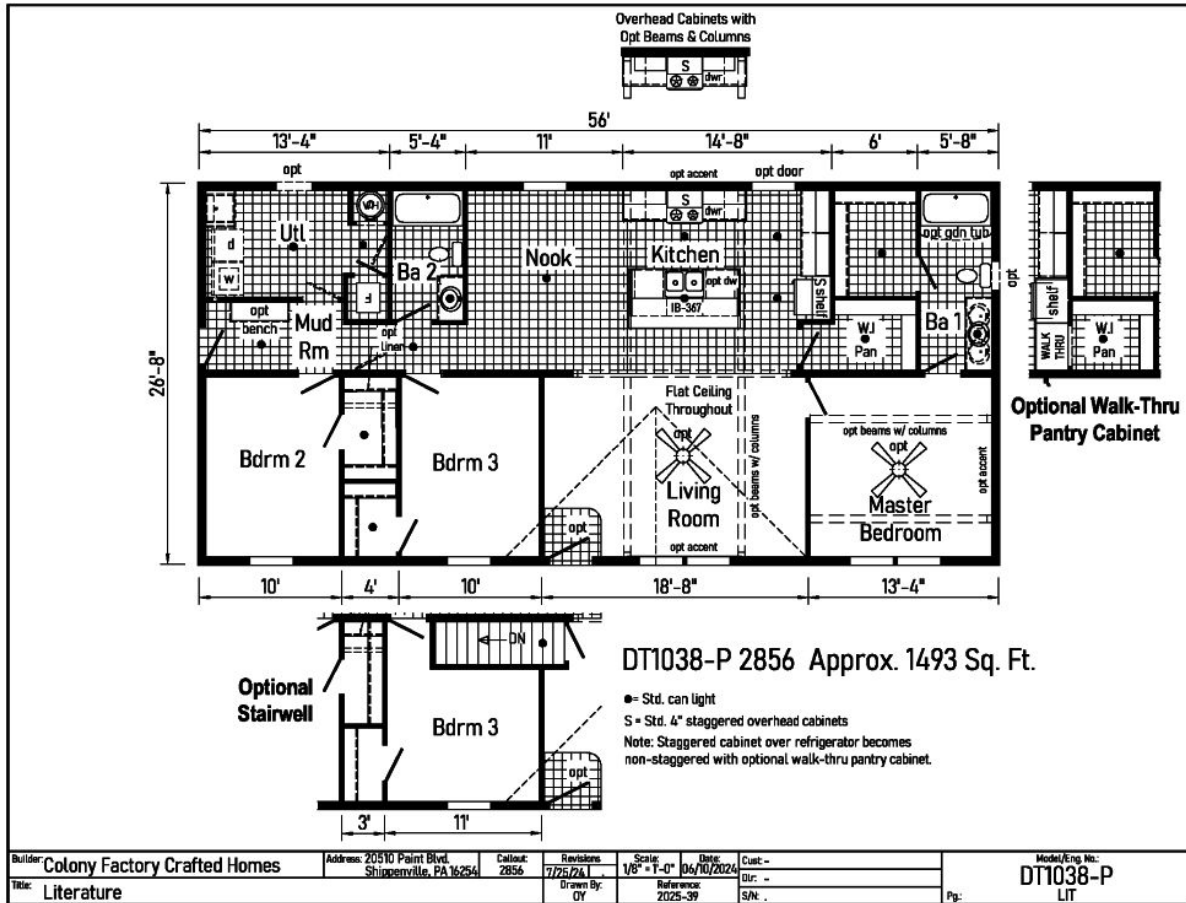


# PRINTABLE INFO SHEET

Series: Beacon Prestige

Model: DT1038-P



## About This Model

Style: Ranch / Bedrooms: 3 / Bathrooms: 2 / Square Feet: 1493

## CUSTOMER CONTACT

Notes: \_\_\_\_\_

\_\_\_\_\_

\_\_\_\_\_

\_\_\_\_\_

# PRINTABLE INFO SHEET



**Series: Beacon Prestige**

**Model: DT1038-P**

## Standards & Features

### INTERIOR

- Flat Ceiling Throughout - Single
- Cathedral Ceiling Throughout -Ranch
- Stipple Ceiling
- 8' Sidewall Height - Single
- 7'6" Sidewall Height - Ranch
- Vinyl Wall Coverings on Gypsum
- LED Flush Mount Ceiling Lights
- Pre-Hung Door Jambs
- Mortise Hinges
- Metal Interior Passage Sets
- Floor Mount Door Stops
- Smoke Detectors With Battery Back-Up
- Wire Shelving in Guest Closet
- 2" Mini Blinds Throughout
- White 6-Panel Passage Doors

### EXTERIOR

- Patina Square Light at Front Door
- Seeded Glass Light at Rear Door
- One GFI-Protected Exterior Receptacle
- Vinyl Dutch Lap Siding
- Sheathing Board Under Siding
- Shingle Roof with
- 4" Eaves &ndash; Single Section (14/16)
- 10" Eaves &ndash; Ranch Homes (28/32)
- 12" Gable End Overhang
- Ridgevent Roof Ventilation System
- 38x82 Steel 6-Panel Front Door
- 34x82 6-Panel Rear Door
- Schlage Exterior Locksets Keyed Alike

### EXTERIOR (continued)

- Vinyl Insulated Windows with Grids
- 12" Raised Panel Shutters on Front Door Side

### CONSTRUCTION

- 2x6 Transverse Floor &ndash; 12/14 wide
- 2x8 Transverse Floor &ndash; 16 wide
- 2x6 Exterior Walls on 16" Centers\*\*
- $\frac{3}{4}$ " T&G OSB Floor Decking
- 20# Roof Load
- Recessed Frame Design

### KITCHEN

- 30" Deluxe Black Gas Range
- Power Range Hood with Light
- 18 Cubic Foot Black, No-Frost Refrigerator
- Stainless Steel Sink - 33x19x7
- Empire Hi-Rise Faucet
- 1 USB Receptacle

### BATHS

- 60" Tub/Showers
- 1.6 Gallon Per Flush Elongated Toilets
- China Stool, Tank and Lid
- Lighted Vent Fan in Each Bath
- Empire Faucets
- Anti-Scald Faucets in Tub/Shower
- Shower Drain w/ Removable Strainer

### CABINETRY

- KCMA Evermore Custom Cabinetry
- MDF Mission Style Cabinet Doors
- Brushed Nickel Cabinet Hardware
- Lined Overhead Cabinets

## CUSTOMER CONTACT

Notes:

---

---

---

---

# PRINTABLE INFO SHEET



**Series: Beacon Prestige**

**Model: DT1038-P**

## Standards & Features (continued)

### CABINETRY (continued)

- 30" Staggered Overhead Cabinets
- Dovetail Drawers
- Laminate Countertops
- Laminate Backsplashes
- Concealed Cabinet Hinges
- Soft Close Drawer Guides
- Base Shelves in Base Cabinets
- Base Shelf in Vanities
- 36" High Bath Vanities

### UTILITIES

- Plumbed and Wired for Washer
- Vented and Wired for Dryer
- 200 AMP Electrical Service
- 30 Gallon Electric Water Heater with Pan
- Electric Furnace
- White 6-Panel Door w/Grill
- Air Exchanger System for Furnace
- Aluminum Heat Ducts
- In-Floor Cross-Over Heating System
- Copper Wiring Throughout
- Main Water Line Shut-Off Valve
- Programmable Thermostat

### FLOORING

- Choice of Various Styles of Textured Carpet:
- Standard 18 oz. Lucerne/Innovations
- Upgrade Styles Available
- Rebond Carpet Pad with Tackstrip
- Carpet Installation

### FLOORING (continued)

- DiamondFlor & Vinyl Floor Coverings

### BEDROOMS

- Switched Receptacles
- Vinyl Wall Coverings in all Bedrooms
- Egress Window Each Bedroom
- Wire Shelving in Wardrobes
- Switched Light in All Walk-In Closets

### INSULATION

- R-14 Fiberglass in Floor
- R-19 Fiberglass in Walls
- R-25 Avg. Blown in Ceiling -Single
- R-28 Avg. Blown in Ceiling & Ranch

## CUSTOMER CONTACT

Notes:

---

---

---

---