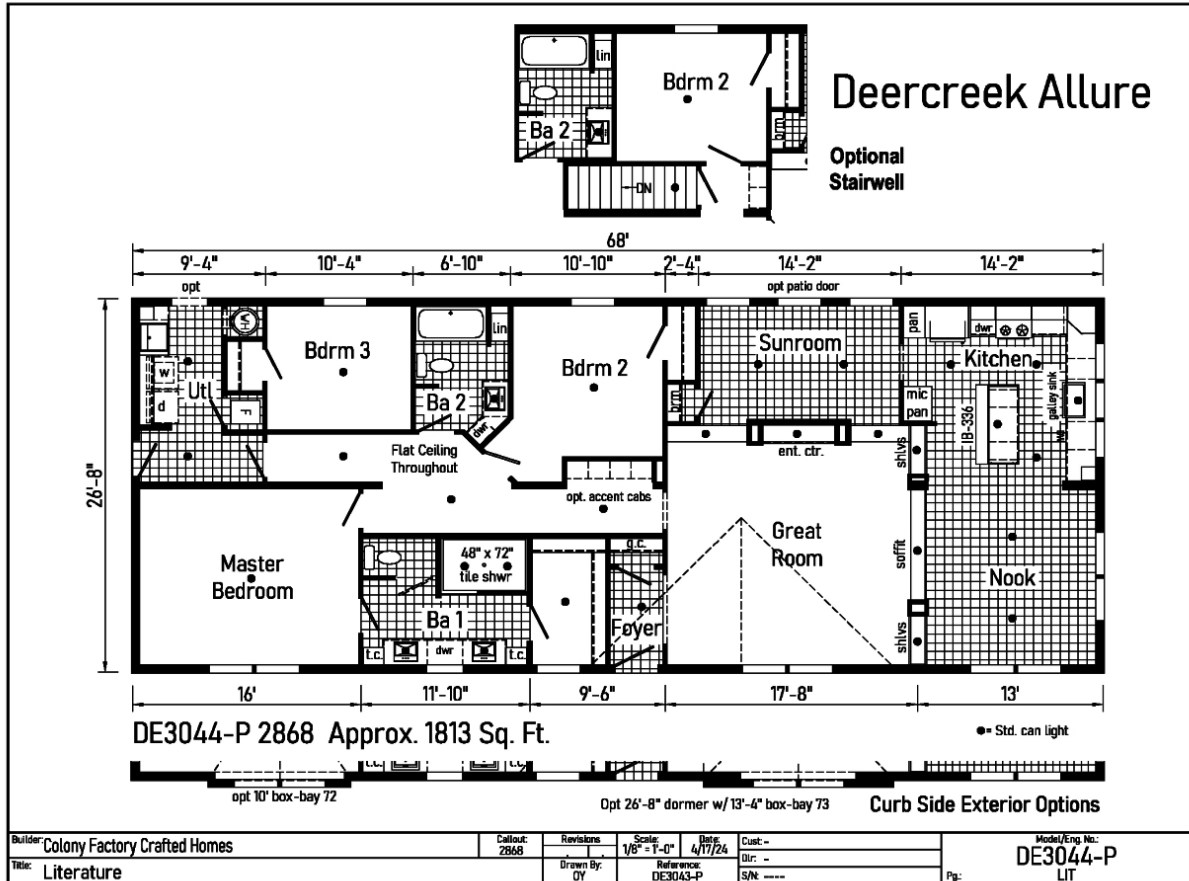


PRINTABLE INFO SHEET



Series: Deercreek Allure
 Model: DE3044-P Deercreek Allure
 MAX



About This Model

Style: Ranch / Bedrooms: 3 / Bathrooms: 2 / Square Feet: 1813

CUSTOMER CONTACT

Notes: _____

PRINTABLE INFO SHEET



Series: Deercreek Allure
Model: DE3044-P Deercreek Allure
MAX

Standards & Features

INTERIOR Flat Ceiling Throughout

- Smooth Ceiling w/ Cove Moulding
- 8' Sidewall Height
- Primed Smooth Drywall Throughout
- LED Flush Mount Ceiling Lights
- Pre-Hung Door Jambs
- Mortise Hinges
- Lever Interior Passage Sets
- Floor Mount Door Stops
- Smoke Detectors With Battery Back-Up
- Wire Shelving in Guest Closet
- 2" Mini Blinds
- Designer Window Treatments
- White 2-Panel Passage Doors
- Craftsman Moulding Package

EXTERIOR Gatsby Light - Front & Rear Door

- GFI-Protected Exterior Receptacles (Front & Back)
- Vinyl Dutch Lap Siding
- OSB Sheathing Under Siding
- 2/12 Roof Pitch with 10" Eaves
- 12" Gable End Overhang
- Ridgevent Roof Ventilation System
- 38x82 Fiberglass 6-Panel Front Door
- 38x82 Fiberglass 6-Panel Rear Door
- Schlage Exterior Locksets Keyed Alike
- Vinyl Insulated Windows w/Grids
- Window Lineals on Front Door Side

CONSTRUCTION

2x6 Transverse Floor, 16" centers**

CONSTRUCTION (continued)

- 2x6 Exterior Walls on 16" Centers**
- 3/4" T&G OSB Floor Decking
- 30# Roof Load
- Recessed Frame Design

KITCHEN

- Stainless Steel SxS Refrigerator
- Stainless Steel Deluxe Range
- Stainless Steel Dishwasher
- Galley Sink w/ Coil Spring Faucet
- Full Ceramic Backsplash
- Refrigerator Surround
- 1 USB Receptacle

BATHS

- Curved Front Garden Tub/Shower Bath 2
- 4x6 Ceramic Walk-in Shower - Bath 1
- 1.6 Gallon Per Flush Elongated Toilets
- China Stool, Tank and Lid
- Square China Lav Sinks
- Lighted Vent Fan in Each Bath
- Structured Flow Brushed Nickel Faucets
- Anti-Scald Faucets in Tub/Shower
- Shower Drain with Removable Strainer
- Double Lav Sinks in Master Bath

CABINETRY

- Evermore Custom Cabinetry (KCMA Certified)
- Premium Cabinetry - Hardwood
- Mission Style Cabinet Doors
- Cabinet Pulls

CUSTOMER CONTACT

Notes:

PRINTABLE INFO SHEET



Series: Deercreek Allure
Model: DE3044-P Deercreek Allure
MAX

Standards & Features (continued)

CABINETRY (continued)

- Contemporary Moulding on Cabinets
- Lined Overhead Cabinets
- 42" Height Overhead Cabinets
- Drawer over Door Base Cabinets
- Concealed Cabinet Hinges
- Soft Close Drawers
- Dovetail Drawers
- Base and Center Shelves in Base Cabinets
- Base Shelf in Vanities
- 36" High Bath Vanities

UTILITIES

- Plumbed and Wired for Washer
- Vented and Wired for Dryer
- Wire Shelf over W/D Hookups
- 100 AMP Electrical Service w/Extended Panel
- 40 Gallon Electric Water Heater with Pan
- Hi-Efficiency Gas Furnace
- White 2-Panel Furnace Door w/Grill
- Perimeter Heating System
- Air Exchanger System for Furnace
- Aluminum Heat Ducts
- In-Floor Cross-Over Heating System
- Copper Wiring Throughout
- Main Water Line Shut-Off Valve
- Programmable Thermostat
- Water Shut-Off Valves
- Exterior Water Faucet (Front & Back)

FLOORING

- Choice of Various Styles of Textured Carpet:
- Standard Shake It Up Carpet
- Upgrade Styles Available
- Rebond Carpet Pad with Tackstrip
- Carpet Installation
- Shaw Fortress Vinyl Flooring per print

BEDROOMS

- LED Flush Mount Lights
- Egress Window Each Bedroom
- Wire Shelving in Wardrobes
- Switched LED Light in All Walk-In Closets

INSULATION

- R-22 Fiberglass in Floor
- R-19 Fiberglass in Walls
- R-31 Avg. Blown in Ceiling

The MAX plans include

- Built in Soffit
- Standard Entertainment Centers
- Drywall Columns
- Each Max plan has unique additional offerings.

Max plans do not include:

- Sloped Range Hood or Easy Trim Out Kit

CUSTOMER CONTACT

Notes:
