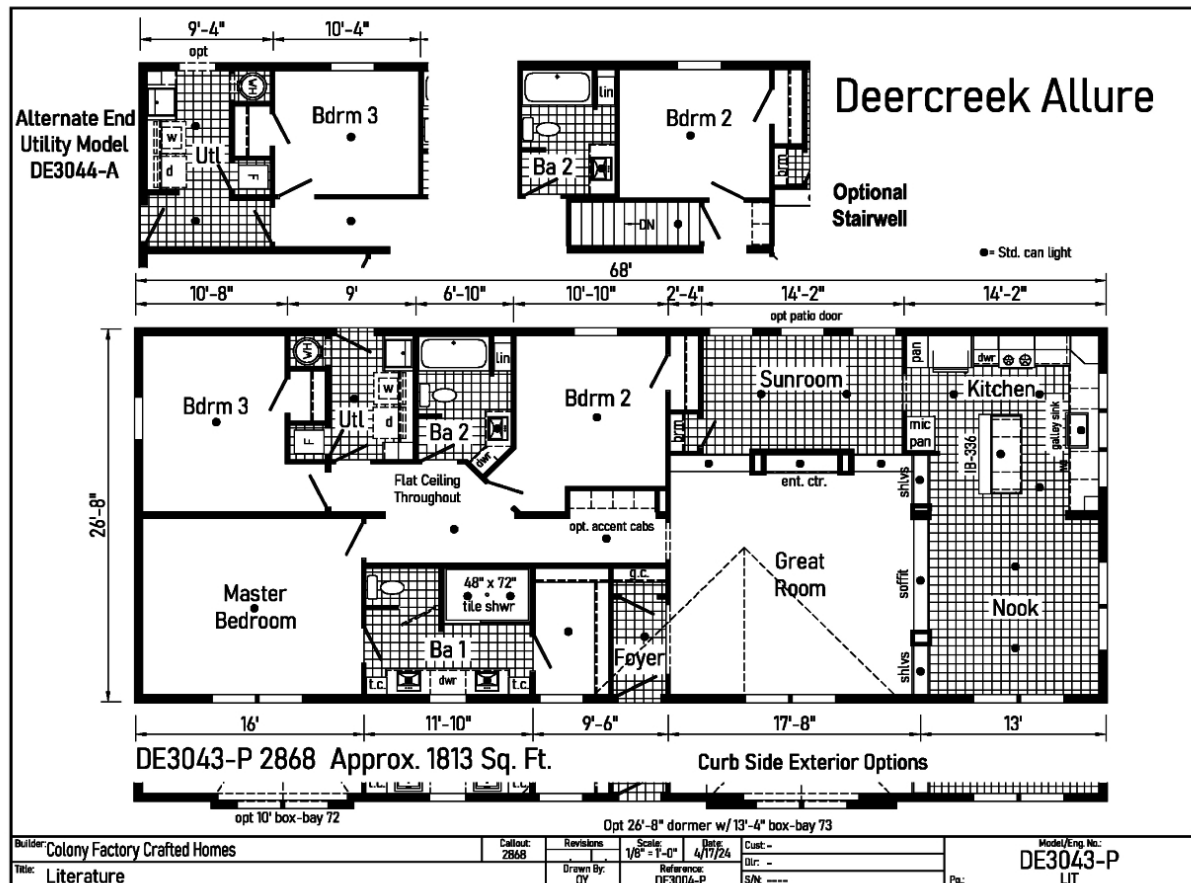


## PRINTABLE INFO SHEET

Series: Deercreek Allure

Model: DE3043-P Deercreek Allure

MAX



## About This Model

Style: Ranch / Bedrooms: 3 / Bathrooms: 2 / Square Feet: 1813

## CUSTOMER CONTACT

Notes:

---



---



---



---

## PRINTABLE INFO SHEET

**Series: Deercreek Allure**

**Model: DE3043-P Deercreek Allure**

**MAX**



## Standards & Features

### INTERIOR Flat Ceiling Throughout

Smooth Ceiling w/ Cove Moulding  
8' Sidewall Height  
Primed Smooth Drywall Throughout  
LED Flush Mount Ceiling Lights  
Pre-Hung Door Jambs  
Mortise Hinges  
Lever Interior Passage Sets  
Floor Mount Door Stops  
Smoke Detectors With Battery Back-Up  
Wire Shelving in Guest Closet  
2" Mini Blinds  
Designer Window Treatments  
White 2-Panel Passage Doors  
Craftsman Moulding Package

### EXTERIOR Gatsby Light - Front & Rear Door

GFI-Protected Exterior Receptacles  
( Front & Back)  
Vinyl Dutch Lap Siding  
OSB Sheathing Under Siding  
2/12 Roof Pitch with 10" Eaves  
12" Gable End Overhang  
Ridgevent Roof Ventilation System  
38x82 Fiberglass 6-Panel Front Door  
38x82 Fiberglass 6-Panel Rear Door  
Schlage Exterior Locksets Keyed Alike  
Vinyl Insulated Windows w/Grids  
Window Lineals on Front Door Side

### CONSTRUCTION

2x6 Transverse Floor, 16" centers\*\*

### CONSTRUCTION (continued)

2x6 Exterior Walls on 16" Centers\*\*  
&frac34;" T&G OSB Floor Decking  
30# Roof Load  
Recessed Frame Design

### KITCHEN

Stainless Steel SxS Refrigerator  
Stainless Steel Deluxe Range  
Stainless Steel Dishwasher  
Galley Sink w/ Coil Spring Faucet  
Full Ceramic Backsplash  
Refrigerator Surround  
1 USB Receptacle

### BATHS

Curved Front Garden Tub/Shower  
Bath 2  
4x6 Ceramic Walk-in Shower - Bath 1  
1.6 Gallon Per Flush Elongated Toilets  
China Stool, Tank and Lid  
Square China Lav Sinks  
Lighted Vent Fan in Each Bath  
Structured Flow Brushed Nickel Faucets  
Anti-Scald Faucets in Tub/Shower  
Shower Drain with Removable Strainer  
Double Lav Sinks in Master Bath

### CABINETRY

Evermore Custom Cabinetry  
(KCMA Certified)  
Premium Cabinetry - Hardwood  
Mission Style Cabinet Doors  
Cabinet Pulls

## CUSTOMER CONTACT

Notes:

---

---

---

---

## PRINTABLE INFO SHEET

**Series: Deercreek Allure**  
**Model: DE3043-P Deercreek Allure**  
**MAX**



## Standards & Features (continued)

### CABINETRY (continued)

Contemporary Moulding on Cabinets  
Lined Overhead Cabinets  
42" Height Overhead Cabinets  
Drawer over Door Base Cabinets  
Concealed Cabinet Hinges  
Soft Close Drawers  
Dovetail Drawers  
Base and Center Shelves in Base Cabinets  
Base Shelf in Vanities  
36" High Bath Vanities

### UTILITIES

Plumbed and Wired for Washer  
Vented and Wired for Dryer  
Wire Shelf over W/D Hookups  
100 AMP Electrical Service  
w/Extended Panel  
40 Gallon Electric Water Heater  
with Pan  
Hi-Efficiency Gas Furnace  
White 2-Panel Furnace Door w/Grill  
Perimeter Heating System  
Air Exchanger System for Furnace  
Aluminum Heat Ducts  
In-Floor Cross-Over Heating System  
Copper Wiring Throughout  
Main Water Line Shut-Off Valve  
Programmable Thermostat  
Water Shut-Off Valves  
Exterior Water Faucet (Front & Back)

### FLOORING

Choice of Various Styles of Textured  
Carpet:  
-Standard Shake It Up Carpet  
-Upgrade Styles Available  
Rebond Carpet Pad with Tackstrip  
Carpet Installation  
Shaw Fortress Vinyl Flooring per print

### BEDROOMS

LED Flush Mount Lights  
Egress Window Each Bedroom  
Wire Shelving in Wardrobes  
Switched LED Light in All Walk-In  
Closets

### INSULATION

R-22 Fiberglass in Floor  
R-19 Fiberglass in Walls  
R-31 Avg. Blown in Ceiling

### The MAX plans include

Built in Soffit  
Standard Entertainment Centers  
Drywall Columns  
Each Max plan has unique additional offerings.

### Max plans do not include:

Sloped Range Hood or Easy Trim Out Kit

## CUSTOMER CONTACT

Notes:

---

---

---

---